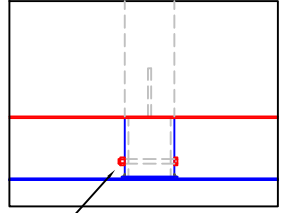
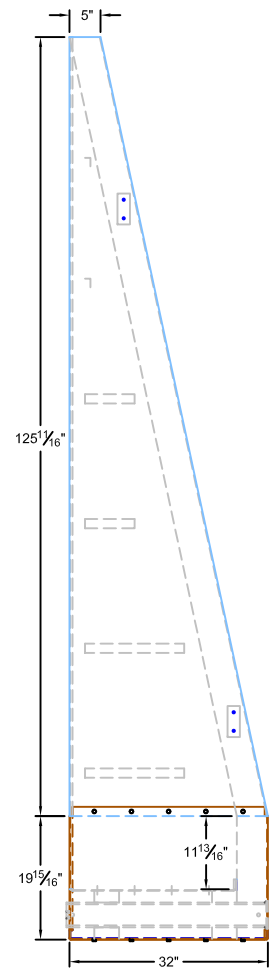
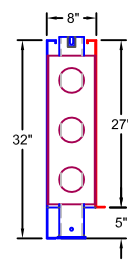


- NOTES:
- 1.) FORM WALLS ARE DESIGNED TO BE COVERED WITH TRACK SURFACE. WHEN SETTING THE COMPLETED FORM, ENSURE THE TOP OF THE WALLS ARE BELOW FINISHED GRADE OF THE TRACK TO ALLOW FOR THE THICKNESS OF THE TRACK SURFACE TO BE INSTALLED.
 - 2.) VERIFY THE PAN HEAD SCREWS SECURING THE INNER WALL SECTIONS ARE INSTALLED WITH THE PAN HEAD EXPOSED.
 - 3.) VERIFY THAT THE 1/2" x 4 1/2" HEX BOLT AND NUT ARE INSTALLED IN THE BASE OF EACH SLEEVE TUBE. SEE DETAIL AT RIGHT.
 - 3.) DURING THE CONCRETE POUR, MONITOR THE DISTANCE BETWEEN THE SIDE WALLS. WALLS MUST REMAIN 12 FEET APART AT ALL POINTS. DEVIATIONS OF MORE THAN 1/4" MAY CAUSE PROBLEMS FITTING PIT COVERS.

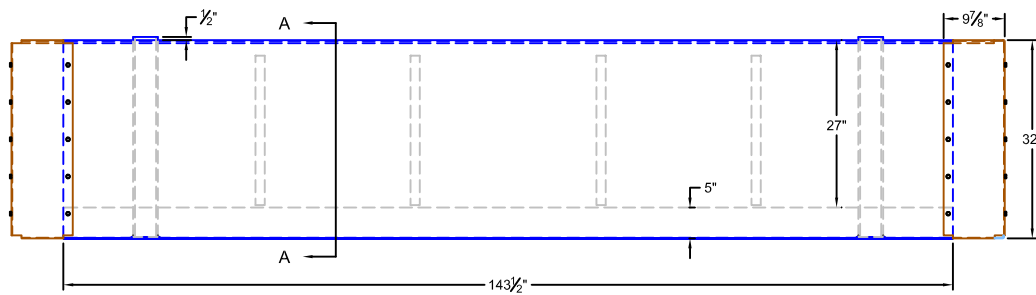


VERIFY 1/2" x 4 1/2" HEX BOLT (M2270) & NUT (M2233) ARE INSTALLED IN BASE OF SLEEVES.

GROUND SLEEVE TUBES ARE A PART OF THE FORMS. THEY PROTRUDE 1/2" ABOVE THE POURED WALL SO AS TO BE NEARLY FLUSH WITH THE FINISHED TRACK SURFACE.



SECTION A-A



SportsEdge

A Division of ABT, Inc.
 P.O. Box 837 * 259 Murdock Road
 Troutman, NC 28166
 800-334-6057

TITLE: STEEPLE CHASE PIT FORM - SLEEVED

DRAWN BY:

CHECKED BY:

DRAWING NUMBER:

SCALE: NONE

DATE: 11/10

A- SE510A

Proprietary rights of ABT, Inc. are included in the information disclosed herein. The recipient, by accepting this document, agrees that neither this document nor the information disclosed herein nor any part thereof shall be copied, reproduced or transferred to others for manufacturing or for any other purpose except as specifically authorized in writing by ABT, Inc..

DISCLAIMER: The customer and the customer's architects, engineers, consultants and other professionals are completely responsible for the selection, installation, and maintenance of any product purchased from ABT, and EXCEPT AS EXPRESSLY PROVIDED IN ABT'S STANDARD WARRANTIES, ABT MAKES NO WARRANTY, EXPRESS OR IMPLIED, AS TO THE SUITABILITY, DESIGN, MERCHANTABILITY, OR FITNESS OF THE PRODUCT FOR CUSTOMER'S APPLICATION. Copies of ABT's standard warranties are available upon request.