

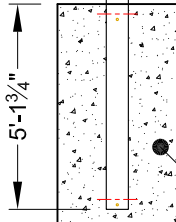
Bolt-On Wing Panels consist of Expanded Metal Fabric on a Tubular Frame

**BASEBALL FOUL POLES (PAIR)
In-Ground/Sleeve Mount**

40' High (6⁵/₈" Pole)
SportsEdge Model SE330004

* Minimum recommended footing size shown. Increase size of footing as required according to local soil conditions, and to meet local building codes regarding minimum wind speeds.

No. SEF33005
Ground Sleeve



Minimum Concrete Footing Size
3'-0" Diameter x 6'-6" Deep

Proprietary rights of ABT, Inc. are included in the information disclosed herein. The recipient, by accepting this document, agrees that neither this document nor the information disclosed herein nor any part thereof shall be copied, reproduced or transferred to others for manufacturing or for any other purpose except as specifically authorized in writing by ABT, Inc..

<p>SportsEdge A Division of ABT, Inc. P.O. Box 837 * 259 Murdock Road Troutman, NC 28166 800-334-6057</p>	<p>TITLE: SportsEdge 40' FOUL POLE</p>	
	<p>DRAWN BY:</p>	<p>CHECKED BY:</p>
<p>SCALE: NONE</p>	<p>DATE: 2012</p>	<p>DRAWING NUMBER: A- SE3300004.1</p>
<p><small>DISCLAIMER: The customer and the customer's architects, engineers, consultants and other professionals are completely responsible for the selection, installation, and maintenance of any product purchased from ABT, and EXCEPT AS EXPRESSLY PROVIDED IN ABT'S STANDARD WARRANTIES, ABT MAKES NO WARRANTY, EXPRESS OR IMPLIED, AS TO THE SUITABILITY, DESIGN, MERCHANTABILITY, OR FITNESS OF THE PRODUCT FOR CUSTOMER'S APPLICATION. Copies of ABT's standard warranties are available upon request.</small></p>		